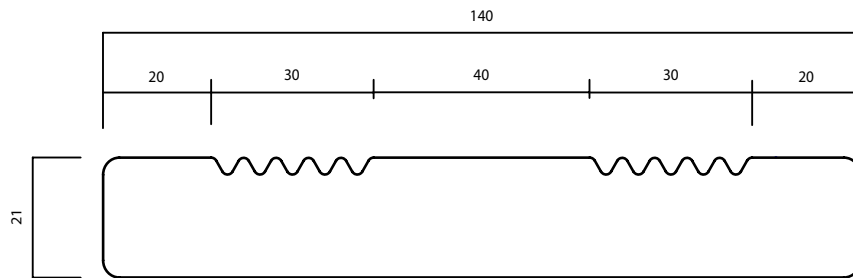




THERMOWOOD®

LDC DECKING 3

21 X 140 MM



PRODUCT:
DURABILITY CLASS:
APPLICATION:

THERMO-D ASH
II
DECKING



LONG SERVICE LIFE AND LOW MAINTENANCE



WOOD.BE

PATENTED NATURAL PRODUCTION PROCESS
CONTROLLED BY WOOD.BE



SUSTAINABLE FOREST MANAGEMENT AND LOW
ECOLOGICAL FOOTPRINT



LDCWOOD IS A MEMBER OF THE INTERNATIONAL
THERMOWOOD® ASSOCIATION (ITWA)

LDCWOOD NV/SA
BTW BE 0665.682.393

VERGUNNINGENSTRAAT 7
B-8400 OSTEND

T. +32 59 50 55 14

PROTECTEDBYNATURE@LDCWOOD.COM
WWW.LDCWOOD.COM

This product datasheet provides purely informative information about the products and services offered by LDCwood. Without verification or further advice, use of the information provided is entirely at the user's risk. Despite the fact that LDCwood takes the utmost care to ensure that the information is reliable and up-to-date, this product datasheet may contain inaccuracies. LDCwood may change the product datasheet at its own discretion and at any time. All data illustrated in this datasheet (including, but not limited to: text, photos, illustrations, graphic material, (trade) names, logos, goods) are the property of or under licence from LDCwood and are protected by intellectual property law. Only Belgian law is applicable to disputes relating to this product datasheet.